

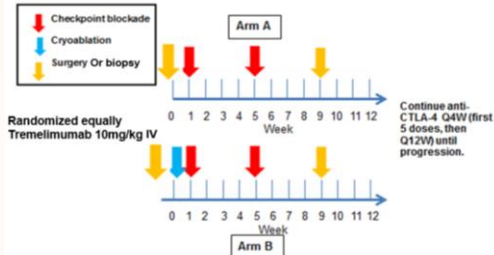
# A pilot study of Tremelimumab with or without cryoablation in patients with metastatic renal cell carcinoma (mRCC): a post hoc analysis of patients with clear cell (cc) versus non-clear cell (ncc) histologies

Matthew T Campbell, Surena F Matin, Alda L Tam, Rahul A Sheth, Kamran Ahrar, Rebecca S Tidwell, Priya Rao; Jose Karam, Christopher Wood, Nizar M Tannir, Eric Jonasch, Jianjun Gao, Amado Zurita, Amishi Y Shah, Alexandra B Espejo, Fei Duan, Sreyashi Basu, Shalini S Yadav, James P Allison, Padmanee Sharma.

UT MD Anderson Cancer Center, Houston, TX: Study sponsored by AstraZeneca (MedImmune), Research support Conquer Cancer Foundation YIA grant

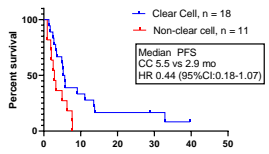
## Trial Design

Clinical Trial: NCT02626130 (IIT AstraZeneca Sponsored)

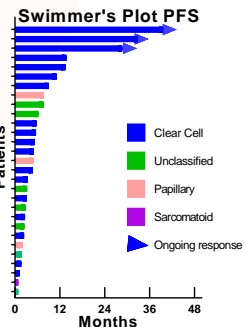
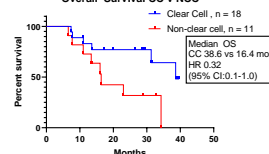


## Outcome based on histology

PFS CC v NCC



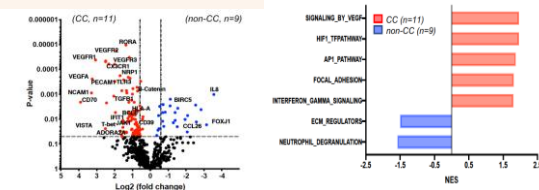
Overall Survival CC v NCC



The baseline tumoral microenvironment in clear cell histology is more favorable for anti-CTLA-4 therapy as compared to non-clear cell histologies

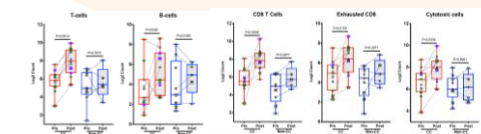
Anti-CTLA-4 therapy generates an inflammatory tumor micro-environment in clear cell but not in non-clear cell histologies

## Baseline Gene Expression cc vs ncc (RNA NanoString)



## Baseline vs post treatment immune changes in cc vs ncc

NanoString: Gene Expression



Immunohistochemistry

